



*Parva*

*A perfect*  
**COMBINATION**  
*of EFFICIENCY,*  
**COMPACTNESS,**  
**SAFETY AND**  
**SECURITY.**

*two year*  
**2**  
*guarantee*

**COMPACT CASE DIMENSIONS**

**NO COMPARTMENT VENTILATION NEEDED**

**ANTI-SCALE CONTROL SYSTEM**

**FITTED CENTRAL HEATING TIME CONTROL**

**ELECTRONIC IGNITION SYSTEM**

**AUTOMATIC BOILER BYPASS**

**L.P.G. KITS AVAILABLE**

**SELF-DIAGNOSTIC INFORMATION SYSTEM**

 **BIASI**

*Combi Boilers, Italian Style.*



# EFFICIENT CENTRAL HEATING AND HOT WATER IN THE KITCHEN

## A MODEL TO SUIT EVERY NEED

The highly compact Biasi 'Parva' range of combi boilers offer you a choice of outputs from 24kW (80,000 Btu's) to 28kW (96,000 Btu's) so there's a model to meet every requirement.

Their supremely high efficiency ratings come from having a sealed combustion chamber and purpose designed heat exchangers - features developed and perfected over many years by Biasi development engineers.

## SAVING YOU SPACE ALL OVER THE PLACE

No hot water cylinder means more room in the airing cupboard and no cold water storage tanks giving you more space in the loft.

The compact design of the Biasi 'Parva' combi lets you install it anywhere in the kitchen, in the utility room ... even in the garage! What's more, the elegant Italian styling and beautiful gloss white casing will compliment any décor scheme.

A wide choice of flue options for easier boiler siting are available. These include vertical and multi-directional horizontal room-sealed balanced flues that allow the ingress of fresh air for combustion and expel the waste products of combustion to the outside via an integral fan unit.



## HOW DOES A COMBI BOILER WORK EXACTLY?

Unlike a conventional domestic central heating and hot water system a combi (short for combination) boiler heats water taken directly from the cold mains - but only as you use it. There's no hot water cylinder in the airing cupboard. No tanks in the loft and, consequently, none of the connecting pipework, which all too often can freeze up, burst and cause floods. Combi boilers, especially those made by Biasi, are very compact and designed to be wall mounted so saving you space and reducing hot water costs into the bargain.

And because a combi supplies constant hot water at mains pressure, you can enjoy an invigorating powerful shower without having to install a pump!

As for bathing, you don't have to wait ages for a cylinder to heat up either. In fact, you'll be pleasantly surprised at how quickly a Biasi boiler delivers plenty of hot water.

*Winter/Summer and Central Heating temperature control*



*Boiler operation indicator light*

*Domestic Hot Water temperature control*

*Lockout warning light*

*Lockout reset button*

*Time clock*

*Central Heating temp/pressure gauge*

# CENTRAL HEATING AND INSTANT A SMART COMPACT DESIGN!

It doesn't end there. 'Parva' combi boilers have been designed with flexibility of siting uppermost and so there is no need to provide, for example, compartment ventilation when installed in kitchen unit type locations.

## **SIMPLE CONTROLS TO SAVE YOU EVEN MORE**

All Biasi 'Parva' combi boilers have a fully automatic electronic ignition system, without a pilot flame, which saves you money on gas bills, of course.

They also come with a central heating time control fitted as standard and the facility to connect to a room thermostat, so you can control your heating needs precisely according to the demands of your household.

### *Safe as Houses*

'Parva' combi boilers come with many features and devices as standard - unlike other makes where they are optional 'extras'.

### *Anti-Scale Control System*

The build-up of limescale in any system can cause problems. With the 'Parva' combi boilers, temperature regulation is the key to prevention of limescale.

Temperatures within the main circuit are kept below the critical zone temperature of 75°C, so restricting scale formation.

And even if it should accumulate, the INOX steel coating on the domestic hot water plate heat exchanger means it can be easily maintained by your service engineer.

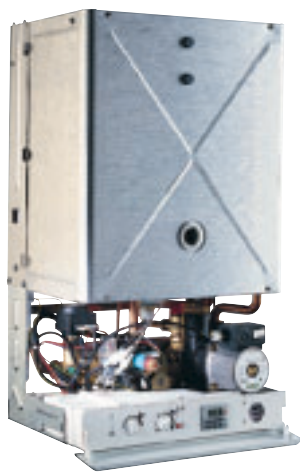
### *Safety Flow Switch*

This is a device, positioned on the main circuit, which monitors the flow of water and protects the main heat exchanger from thermal shock should the system lack water or have poor circulation.

### *Frost Protection System*

All Biasi 'Parva' boilers in the range have an integral frost protection system to prevent frost damage to the boiler occurring when it is located in areas susceptible to very cold weather conditions, like a garage installation.

*Domestic Hot Water  
The INOX steel D.H.W. plate  
exchanger is easy to clean and delivers  
hot water quickly.*



### *Boiler Operation Recognition System*

Should the 'Parva' boiler not be used for longer than 24 hours, it then performs a controlled exercise routine, which ensures that the motorised components within the boiler do not become inoperable due to lack of use.

### *Radio Disturbance Immunity*

The electronic p.c.b. is equipped with devices that protect the operation of the boiler from certain radio frequencies which can be harmful.

### *Temperature Fluctuations (± 1°C)*

The gas valve modulates continuously when operating in both heating and hot water cycles. Because the central heating output can be adjusted during the commissioning procedure to match your heating system requirements, the temperature fluctuation is always maintained within ±1°C.

## **SO EASY TO INSTALL AND MAINTAIN**

With no tanks, no cylinder and a lot less pipework to connect them the 'Parva' combi boilers offer you substantial savings on materials as well as installation time and costs. And because they have been designed for easy access to all the main components, servicing time and bills are greatly reduced as well.

The 'Parva' range of boilers incorporate a Diagnostic Information System on the main printed circuit board which is designed to assist the Installer and Service Technician to ensure the correct functioning of the boiler's operational control system.

## **L.P.G KITS MAKE PARVA COMBIS A NATURAL CHOICE**

You don't have to have a natural gas supply to enjoy the advantages of a 'Parva' combi.

One of the real benefits of them is that conversion kits are available for liquid petroleum gas users.

## **PEACE OF MIND**

Naturally, to ensure your peace of mind every Biasi 'Parva' boiler in the range comes with our Two Year Manufacturer's Guarantee. Simply complete and return the Guarantee Certificate to us at the time of purchase.



 **BIASI**  
*Combi Boilers, Italian Style.*

# 'PARVA' TECHNICAL CHARACTERISTICS

Technical Data	M90.24S	M90.28S
<b>CENTRAL HEATING</b>		
Heat Output	kW 24.0	28.0
	Btu's 81,883	95,530
Heat Input	kW 26.6	31.1
	Btu's 90,754	106,107
Minimum Heat Output	kW 9.3	11.0
	Btu's 31,730	37,530
Efficiency (100%) load	% 91.3	91.2
Efficiency (30%) load	% 87.0	87.2
Temperature Setting Range	°C 38/85	38/85
Expansion Vessel Capacity	litres 6	6
Maximum Working Pressure	bar 3.0	3.0
System Cold Fill Pressure	bar 1.4	1.4
Normal Operating		
Pressure Range	bar 1.3 to 2.7	1.3 to 2.7
Available Pump Pressure		
(at 1000 litres/hr)	bar 0.3	0.3
	m.w.c. 3.0	3.0

<b>DOMESTIC HOT WATER</b>		
Heat Output	kW 24.0	28.0
	Btu's 81,883	95,530
Heat Input	kW 26.6	31.1
	Btu's 90,754	106,107
Temperature Setting Range	°C 35/55	35/55
Normal Working		
Pressure Range	bar 0.3 to 5.0	0.3 to 5.0
Minimum Working Pressure	bar 0.3	0.3
Maximum Pressure	bar 10.0	10.0
Minimum Flow Rate	l/min 2.5	2.5
Flow Rate ( $\Delta t = 30^\circ\text{K}$ )	l/min 11.1	13.3
Flow Rate ( $\Delta t = 35^\circ\text{K}$ )	l/min 9.5	11.5

<b>OTHER DATA</b>		
Voltage/Frequency	V/Hz 230/50	230/50
Power	W 150	170
Height	mm 703	703
Width	mm 400	400
Depth	mm 310	310
Weight	kg 37	39
C.H. Inlet & Outlet Connections		
mm/"	22/3/4	22/3/4
Gas Inlet Connection		
mm/"	22/3/4	22/3/4
D.H.W. Inlet & Outlet Connections		
mm/"	15/1/2	15/1/2
Standard Flue Pipe $\phi$ (Nominal Length 1m)		
mm	60/100	60/100
Maximum Horizontal		
Length of Flue Pipe	m 2.65	2.0
Minimum Horizontal		
Length of Flue Pipe	m 0.5	0.5

See Boiler Accessories Brochure for Specific Flue Component Details.  
**Clearance requirements:**  
 Top and Bottom 200mm, Left Hand Side 25mm, Right Hand Side 50mm.  
 Minimum Front Clearance requirement in Operation 50mm.  
 Minimum Front Clearance requirement for Servicing & Maintenance 600mm.

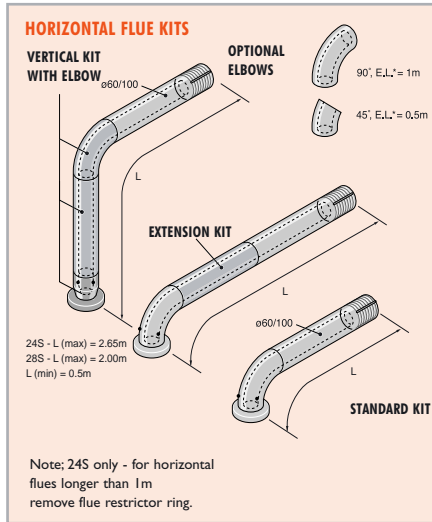
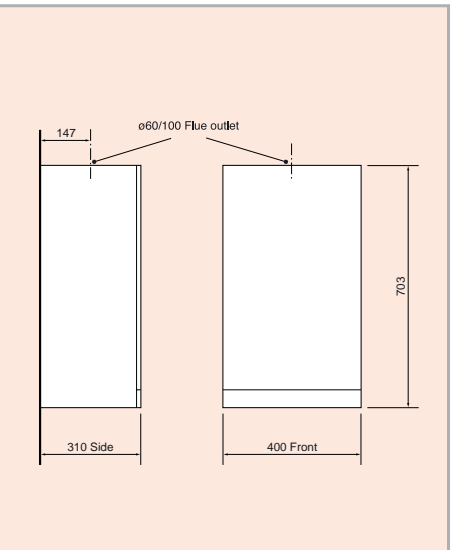
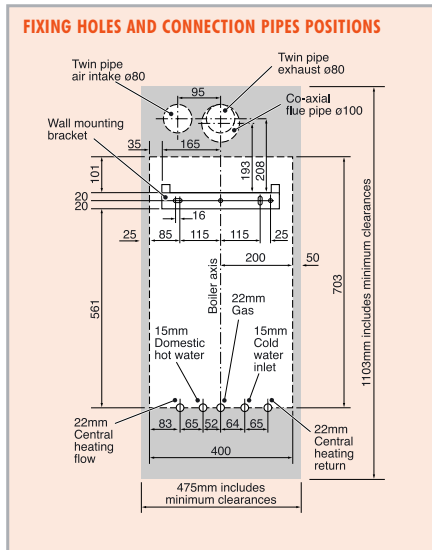
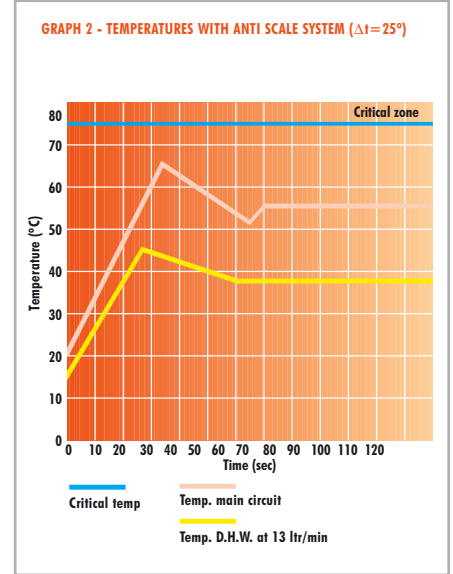
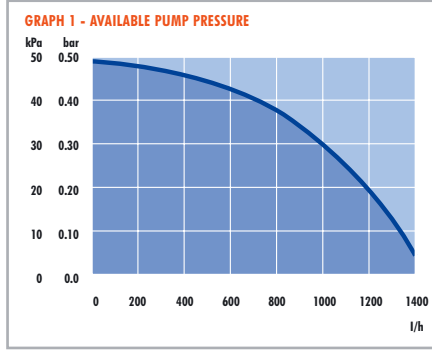


**CUSTOMERS SERVICE HELPLINE**  
 For Technical, Service & Spares  
**Tel: 01902 304400**  
**Fax: 01902 307160**

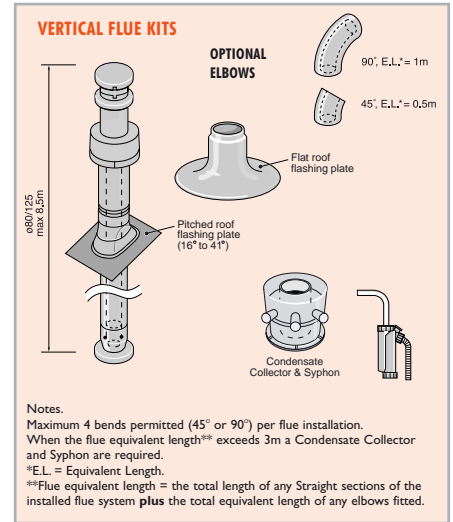


*Combi Boilers, Italian Style.*

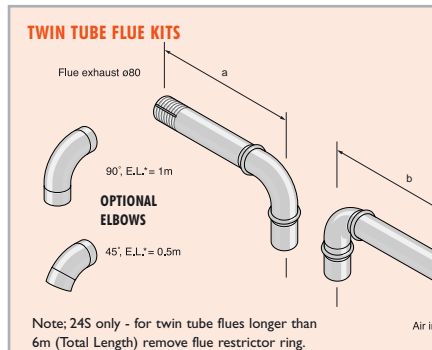
Biasi UK Ltd,  
 Units 31/33 Planetary Road  
 Industrial Estate,  
 Neachells Lane,  
 Willenhall,  
 Wolverhampton, WV13 3XB.  
 Tel: (Sales) 01902 304304.  
 Fax: 01902 304321.



Note: 24S only - for horizontal flues longer than 1m remove flue restrictor ring.



Notes:  
 Maximum 4 bends permitted (45° or 90°) per flue installation.  
 When the flue equivalent length\*\* exceeds 3m a Condensate Collector and Syphon are required.  
 \*E.L. = Equivalent Length.  
 \*\*Flue equivalent length = the total length of any Straight sections of the installed flue system plus the total equivalent length of any elbows fitted.



Note: 24S only - for twin tube flues longer than 6m (Total Length) remove flue restrictor ring.

